

Setting the Standard: Charter School Accountability

Senate Education Committee

December 9, 2015

Cindy Schumacher | Executive Director

The Governor John Engler Center for Charter Schools

Central Michigan University

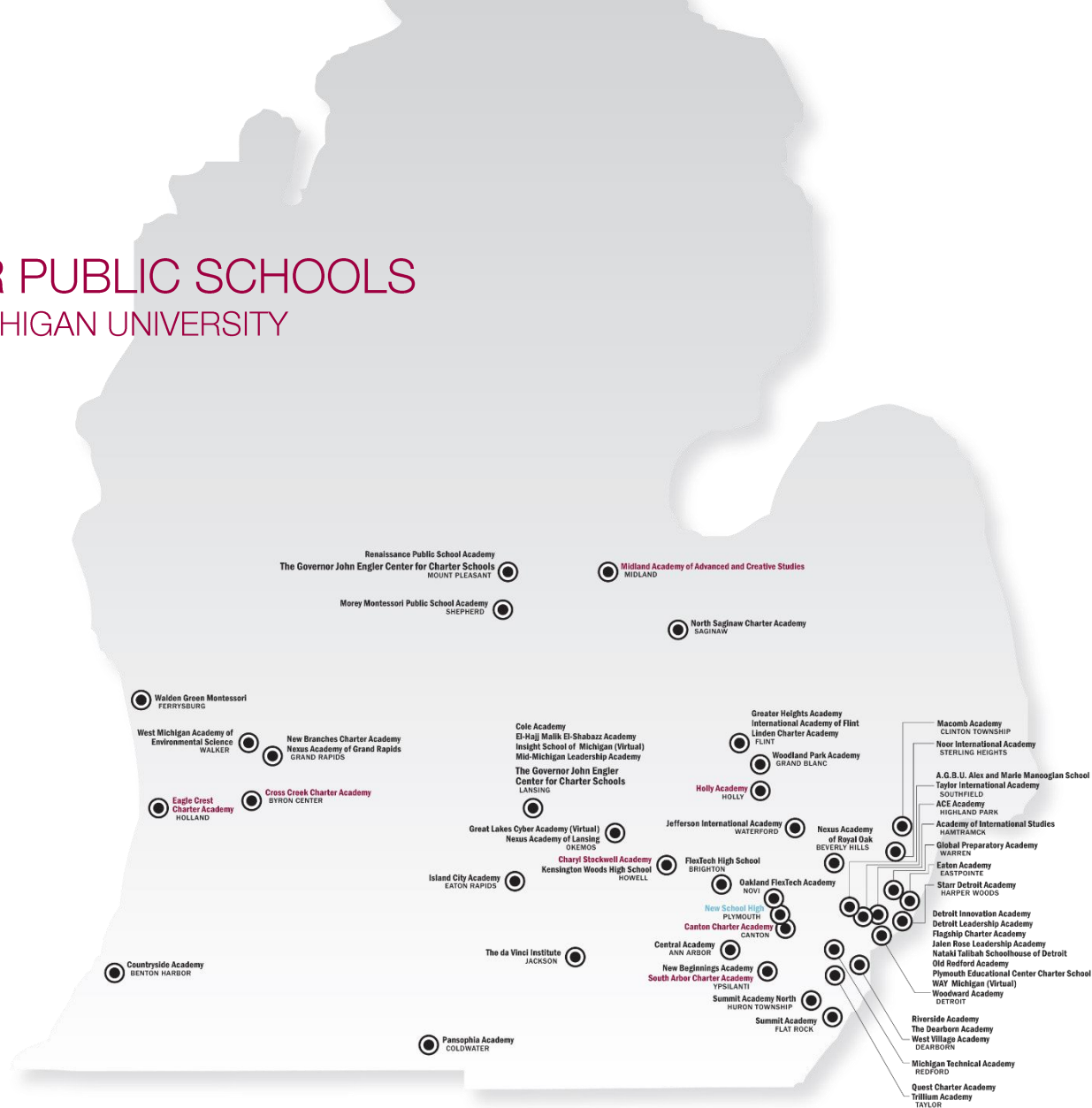
2015 - 2016 CHARTER PUBLIC SCHOOLS

AUTHORIZED BY CENTRAL MICHIGAN UNIVERSITY

61 Public School Academies (PSA)

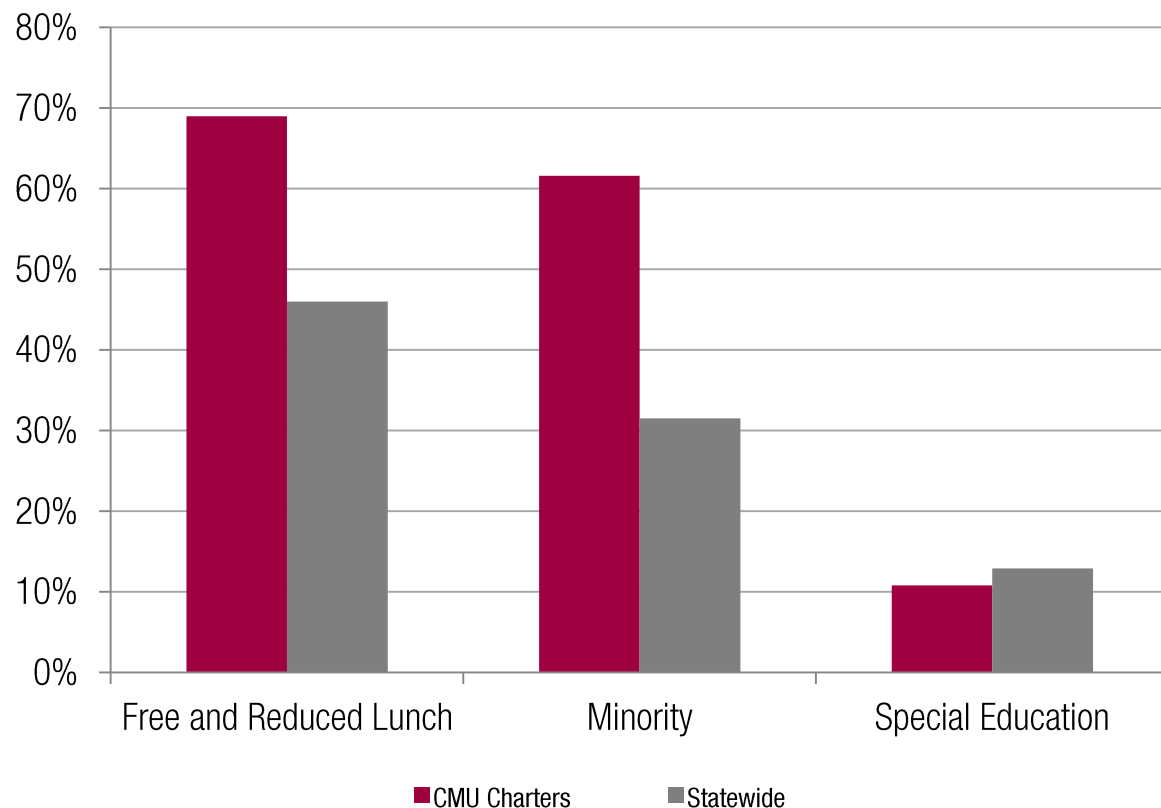
1 Strict Discipline Academies (SDA)

Approximately
31,000 Students



OUR SCHOOLS: BY THE NUMBERS

CMU Charter Students Compared to Statewide Average



50

Number of Elementary Schools

51

Number of Middle Schools

27

Number of High Schools

CMU: BY THE NUMBERS

279

Number of applications received by CMU over the past 10 years. Only 24 – or 8.6% have become operational.

107

Number of applications received by CMU for schools to be located in Detroit over the past 10 years. Only 4 – or 3.7% have become operational.

CMU: BY THE NUMBERS

16

Number of CMU-authorized schools NOT reauthorized over the past 10 years

6

Number of CMU-authorized schools that have reduced the number of grade levels served over the last 10 years

UNIVERSITY BOARD OF TRUSTEES

The University's Board Policy establishes three core questions to consider when issuing a charter contract:

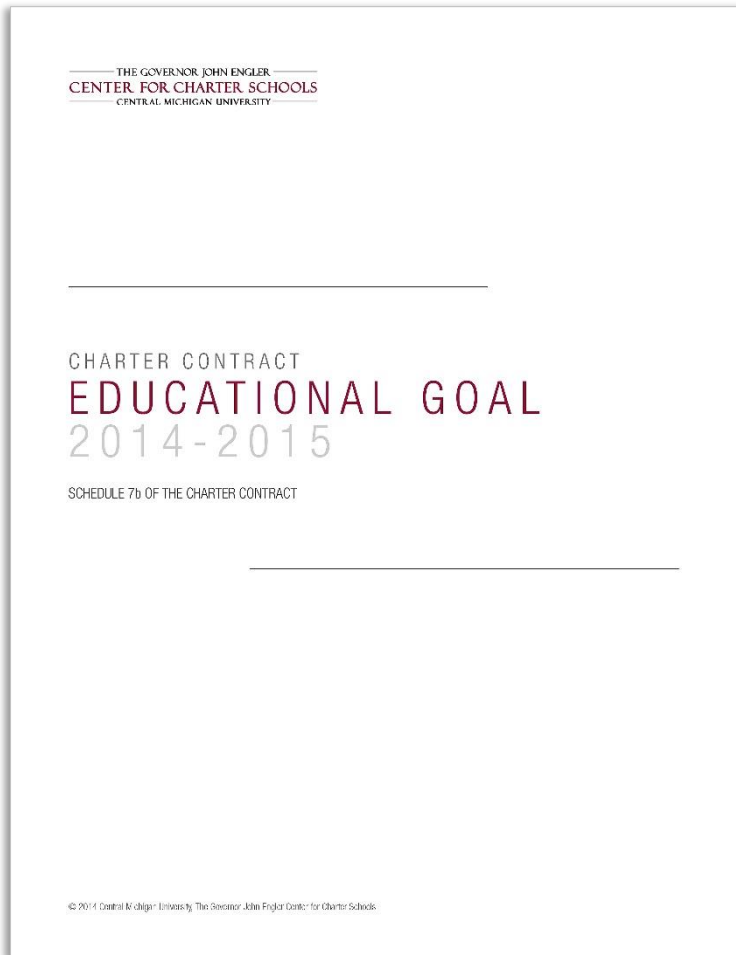
1. Is the Academy's academic program successful?
2. Is the Academy organizationally and financially viable?
3. Is there a demonstration of good faith in following the terms of the charter contract and applicable law?

A PERFORMANCE AGREEMENT

The Charter Contract between the CMU Board of Trustees and the school's board of directors is a *performance contract*. The contract contains standard compliance requirements, as well as specific performance requirements:

1. *Educational Goal*
2. *Fiscal Accountability*
3. *Organizational Performance*

EDUCATIONAL GOAL



The Educational Goal requires each academy to:

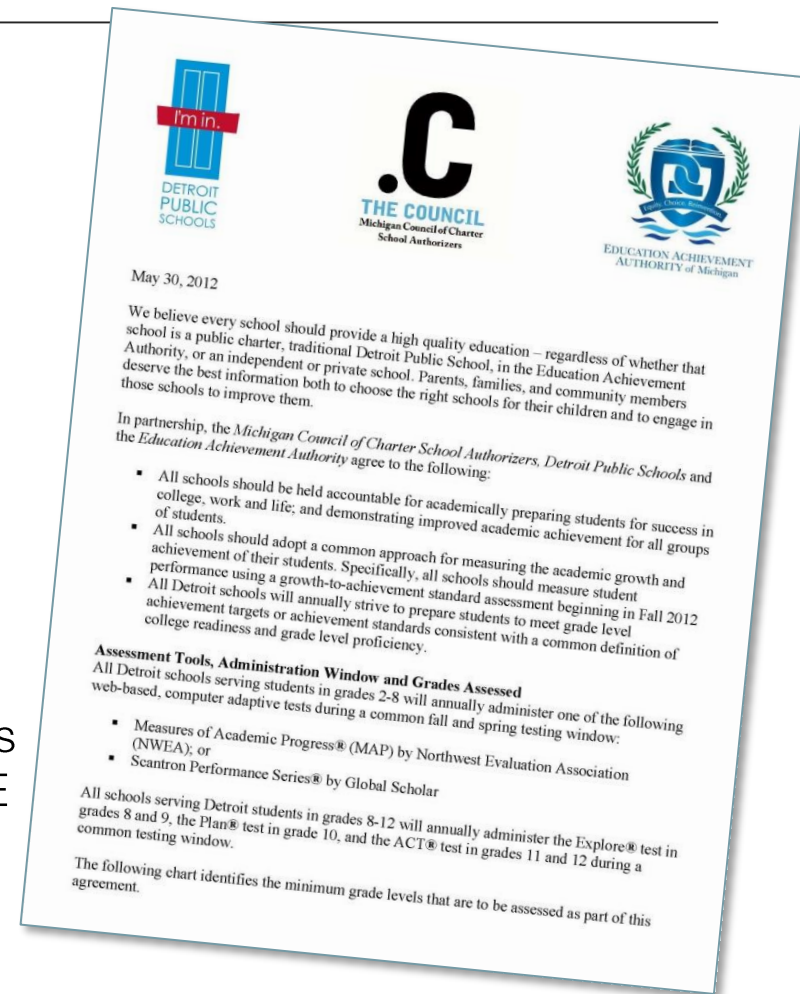
“Prepare students academically for success in college, work and life.”

This is determined by two measures of success:

1. *Student Achievement*
2. *Student Growth*

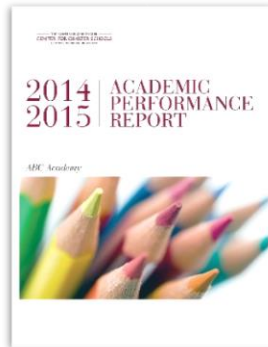
PIONEERS IN COMPUTER ADAPTIVE TESTING SINCE 2001

- All statewide charter authorizers agreed in 2011 to adopt CMU's assessment model including computer adaptive testing and the "growth to standard" analysis.
- Major announcement made on Mackinac Island on May 30, 2012 that DPS and EAA would join charter authorizers and adopt the CMU testing model for every Detroit school, starting in 2012.
- Testing includes MAP by NWEA or Performance Series by SCANTRON in grades 2-8. High school students take the EXPLORE (8/9), PLAN (10) and ACT (11) tests.



PERFORMANCE REPORTS

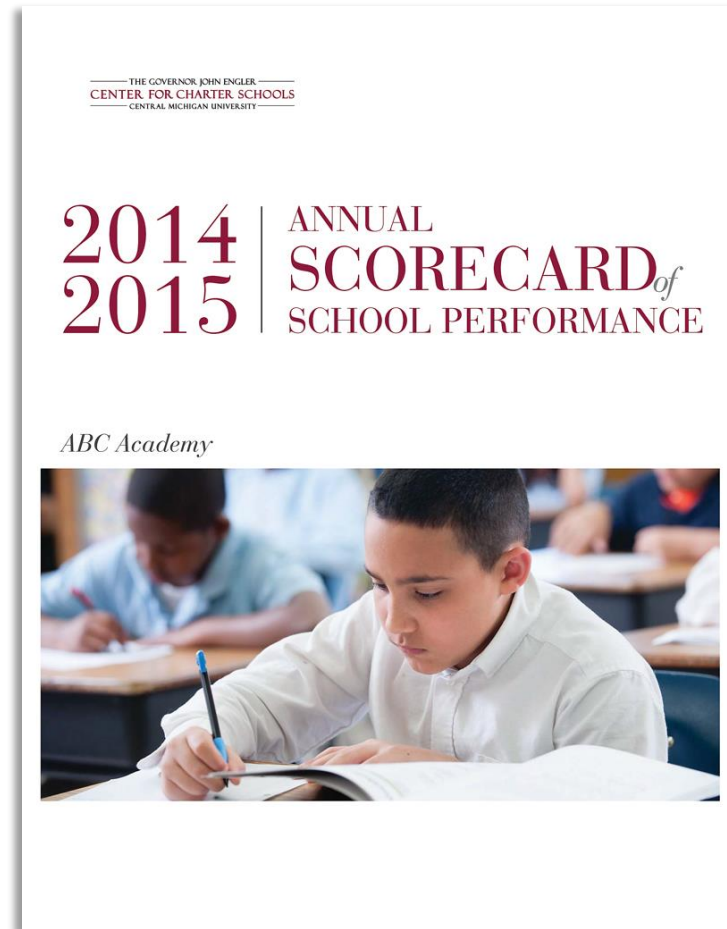
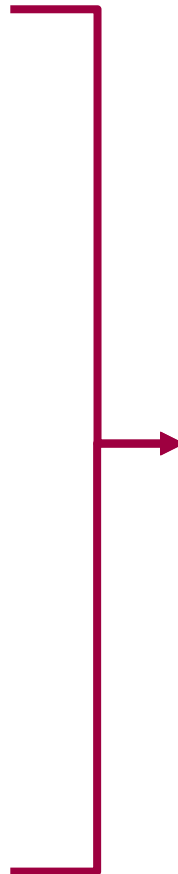
ACADEMIC
PERFORMANCE
REPORT



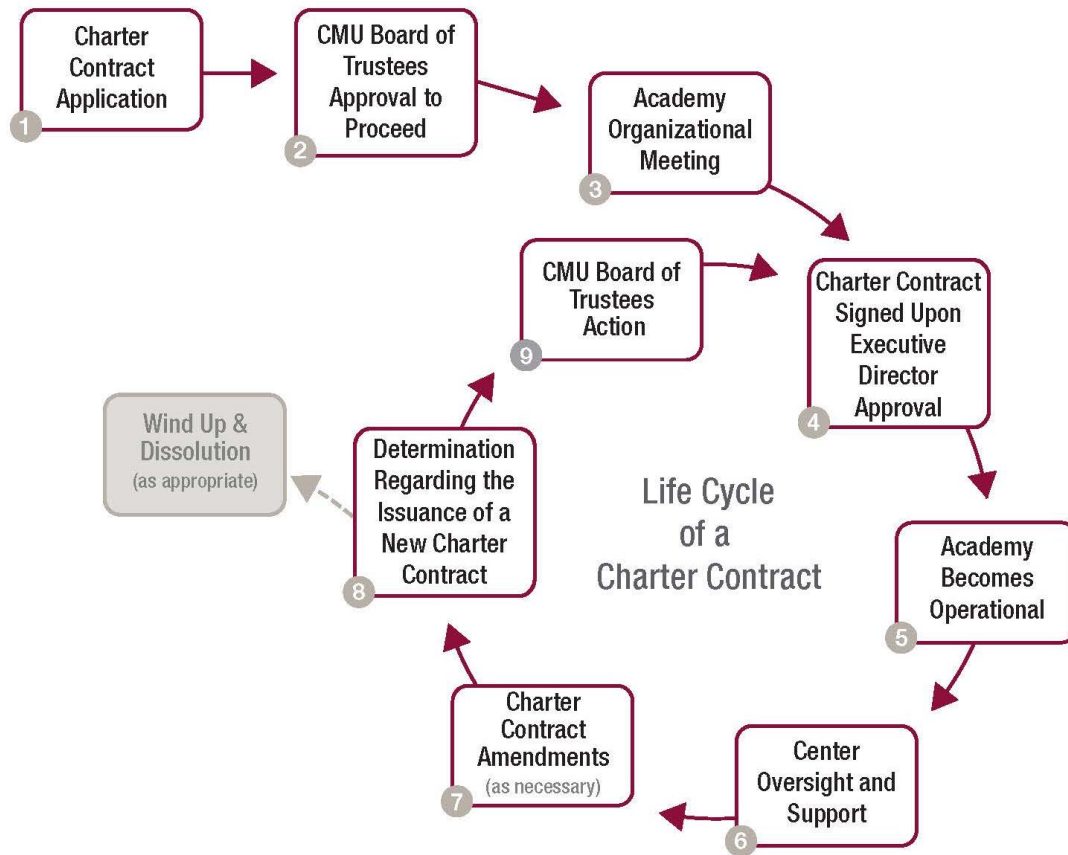
OPERATIONAL
PERFORMANCE
REPORT



FINANCIAL
PERFORMANCE
REPORT



CHARTER CONTRACT CYCLE



REAUTHORIZATION PROCESS

- Oversight
 - Ongoing throughout term of charter contract
- Compile
 - Receive data and documentation from schools
 - Content area experts submit feedback
- Deliberate
 - Review all data and information for each school
 - Discuss specific issues
- Decide
 - Determine necessary interventions
 - Inform board members of decision
 - Assist with student transition (if necessary)

CONSIDERATIONS FOLLOWING CLOSURE DECISION

- Students
- Closure is a process
- Human Resources
- Physical Assets & Facilities

16

Number of CMU-authorized
schools NOT reauthorized
over the past 10 years

RECONSTITUTION CONSIDERATIONS

- Students
- Needs assessment – by the authorizer – of other educational options
- Capacity of school leadership and/or board members to make rapid change
- Enhancing accountability through specific performance benchmarks
- Communication

STATE POLICY CONSIDERATIONS

- Flexible AND Firm
 - Clear performance expectations
 - Rethink “Restart”
- Attract the best talent
 - Indianapolis
 - New Orleans
- Consistent Accountability
 - Reliable student assessments

OUR MISSION

To transform public education through accountability, innovation and access to quality education for all students.
