

# Understanding your Educational Goal

---

The Power of Partnerships: 2019 Annual Conference

August 20, 2019

Novi, Michigan

**Jason Sarsfield**

Deputy Director

The Governor John Engler Center for Charter Schools | Central Michigan University

Who is in the  
room?

## Understanding your Educational Goal: Session Objectives

---

- Understand the revisions being made to the Center's standard Educational Goal language and the reasons for the revisions.
- Review the specific measures of student achievement and growth that the Center utilizes to assess academic performance.
- Examine the performance of the CMU portfolio of schools on the 2018-19 NWEA MAP test.
- Learn and grow together.

### Schedule 7b of the Charter Contract

*“Pursuant to Applicable Law and the Terms and Conditions of this Contract, including Article VI, Section 6.2, the Academy shall achieve or demonstrate measurable progress for all groups of pupils toward the achievement of the educational goal identified in this schedule. Although an increase in academic achievement for all groups of pupils as measured by assessments and other objective criteria is the most important factor in determining the Academy’s progress toward the achievement of the educational goal, the Center also considers other factors. Upon request, the Academy shall provide the Center with a written report, along with supporting data, assessing the Academy’s progress toward achieving this goal. In addition, the University expects the Academy will meet the State of Michigan’s accreditation standards pursuant to state and federal law.”*

# Understanding your Educational Goal: Achievement vs. Growth

---



# Understanding Your Educational Goal: Achievement

---

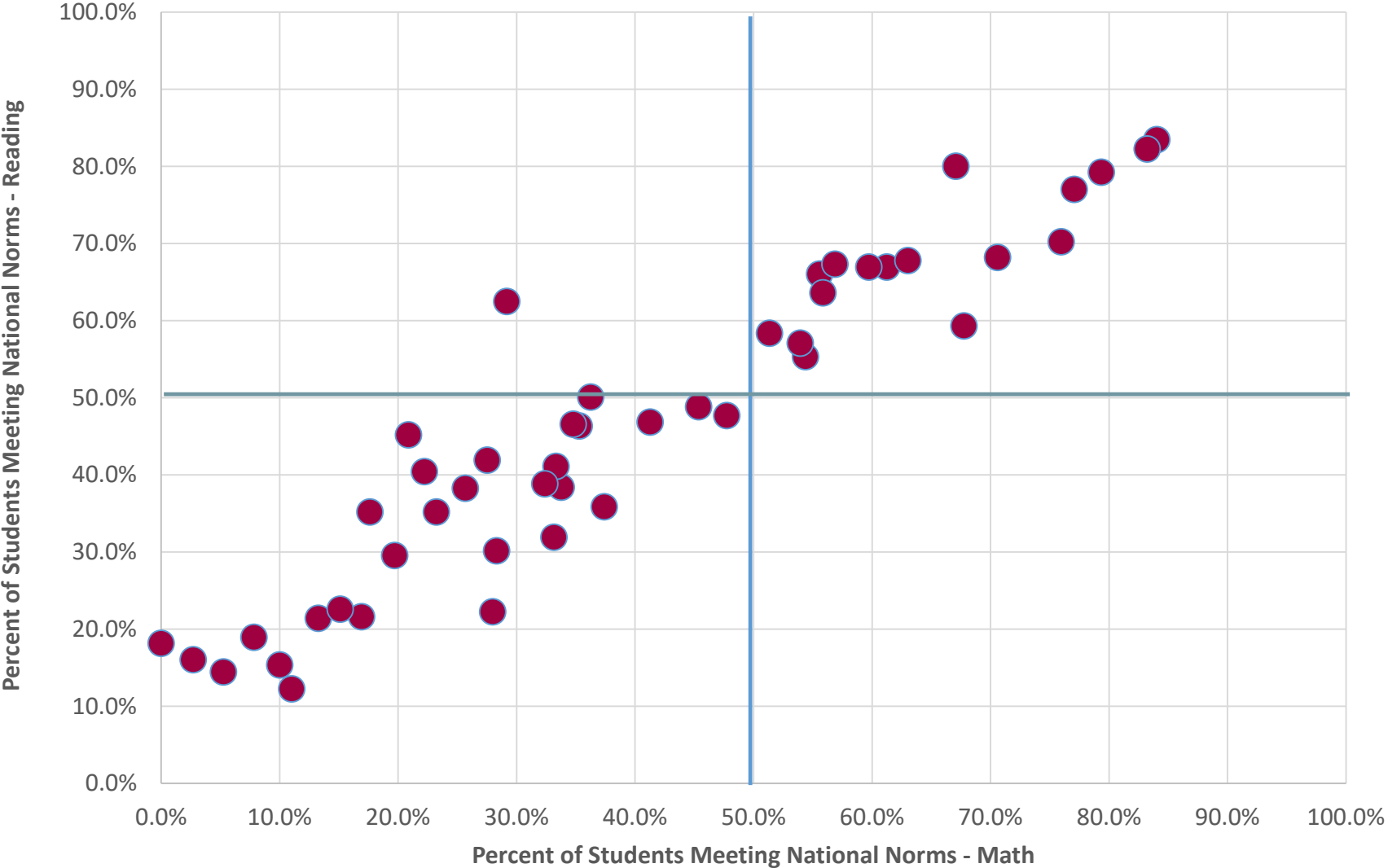
## Historical Achievement Language

<b>Grade(s)</b>	<b>Measure</b>	<b>Achievement Targets</b>
3 to 7/8	The percentage of students achieving scaled scores meeting or surpassing national norms on the NWEA MAP reading and math tests administered in the Spring.	At least 50% of eligible students will produce scaled scores that meet or surpass the grade-level nationally normed benchmarks identified in this schedule.

# Understanding your Educational Goal: Revised Achievement Framework

<b>Measure 1: Student Achievement</b>					
The academic achievement of all students in grades 3-8 (NWEA), who have been enrolled one or more years at the Academy, will be assessed using the following measures and targets					
<b>Sub Indicator</b>	<b>Measure</b>	<b>Not Meeting</b>	<b>Approaching</b>	<b>Meeting</b>	<b>Exceeding</b>
<b>Against a Standard</b>	The percentage of students meeting or surpassing grade-level norms on the NWEA MAP reading and math tests administered in the spring.	Less Than 30%	30-49%	50-69%	70% and Higher
In the event that performance against the standard falls below these required expectations, "measurable progress toward the achievement of this goal" will be defined using the following measures and targets.					
<b>Over Time</b>	The percentage of students meeting or surpassing grade-level national norms over time. (CY-AVG(PY1+PY2+PY3))	Less than 1% Point	1.0-2.9% Points	3.0-5.9% Points	6.0% Points or More
<b>Comparison</b>	The percentage of students categorized as proficient or advanced on the most recent state assessment will surpass the school's Composite Resident District (CRD) percentage.	Underperforms CRD	Outperforms CRD between .01-4.9% Points	Outperforms CRD between 5.0-9.9% Points	Outperforms CRD by 10.0% Points or More

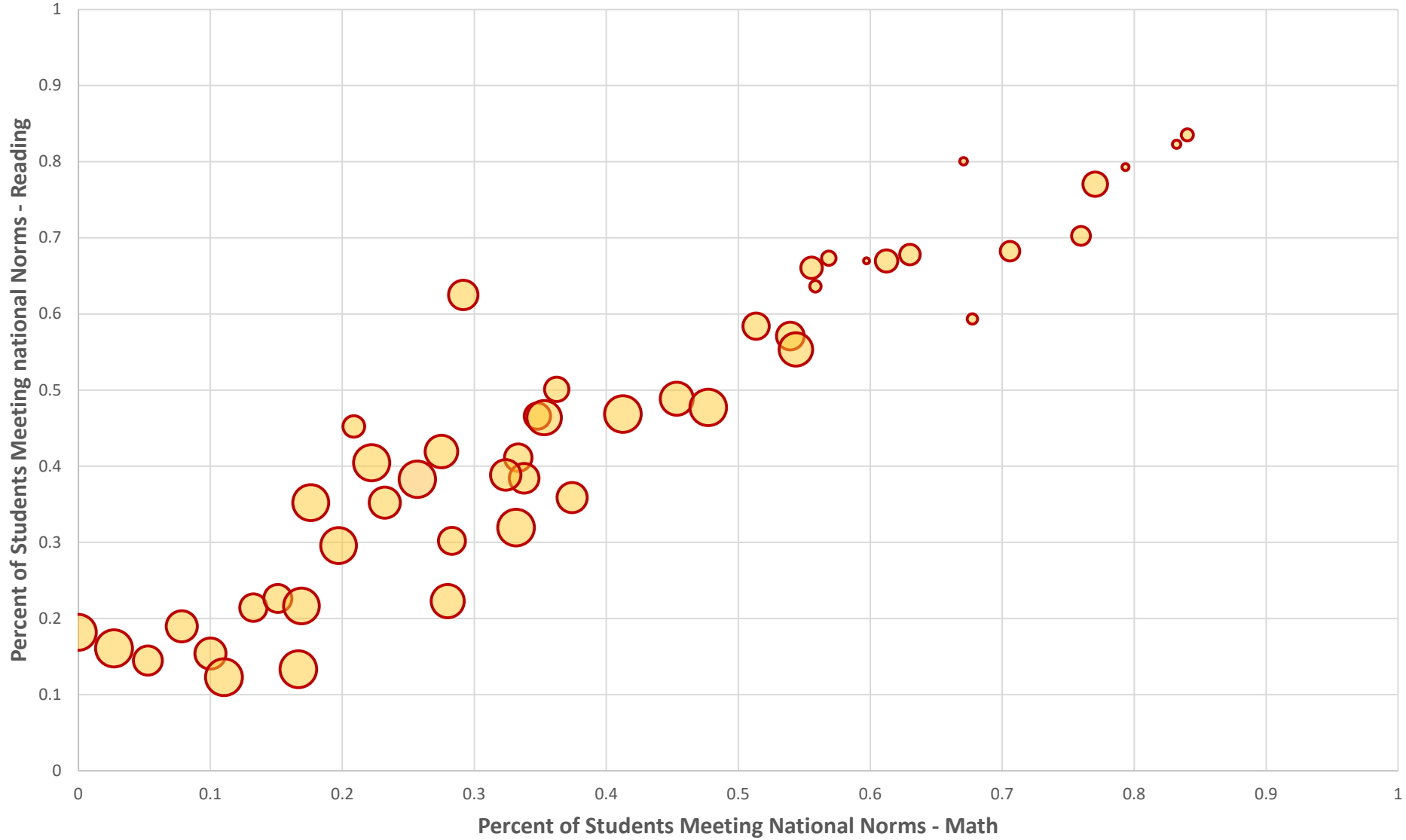
# 2018-19 MAP Achievement: CMU Partner Schools Analysis





# 2018-19 MAP Achievement: CMU Partner Schools Analysis

## Reading & Math Achievement with Percent Eligible FRL



# Understanding Your Educational Goal: Growth

---

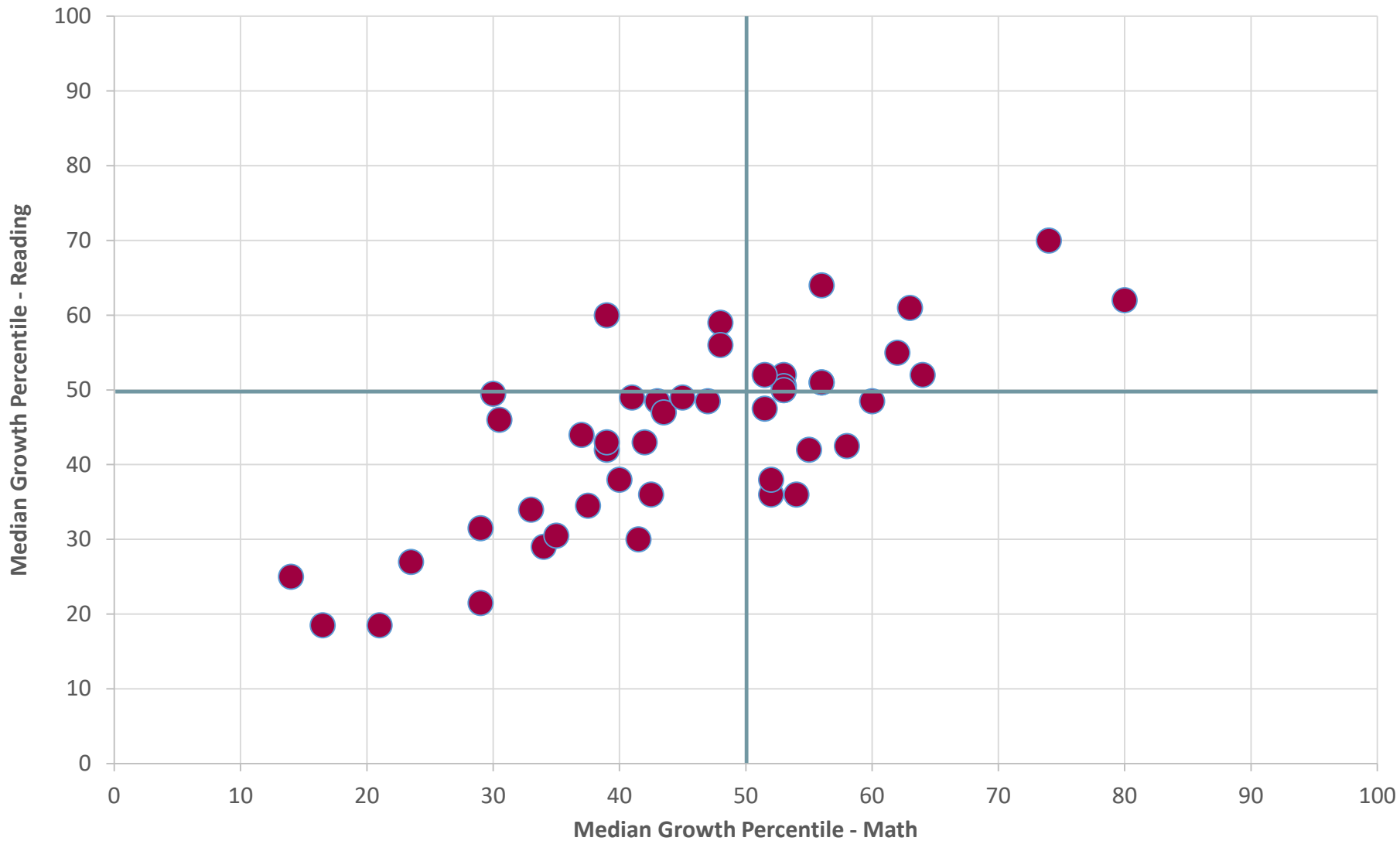
## Historical Growth Language

<b>Grade(s)</b>	<b>Measure</b>	<b>Achievement Targets</b>
3 to 7/8	The median of student growth percentiles reflecting fall-to-spring scaled score growth on the reading and math NWEA MAP tests.	The median growth percentile will be at or above the 50 <sup>th</sup> percentile.

# Understanding your Educational Goal: Revised Growth Framework

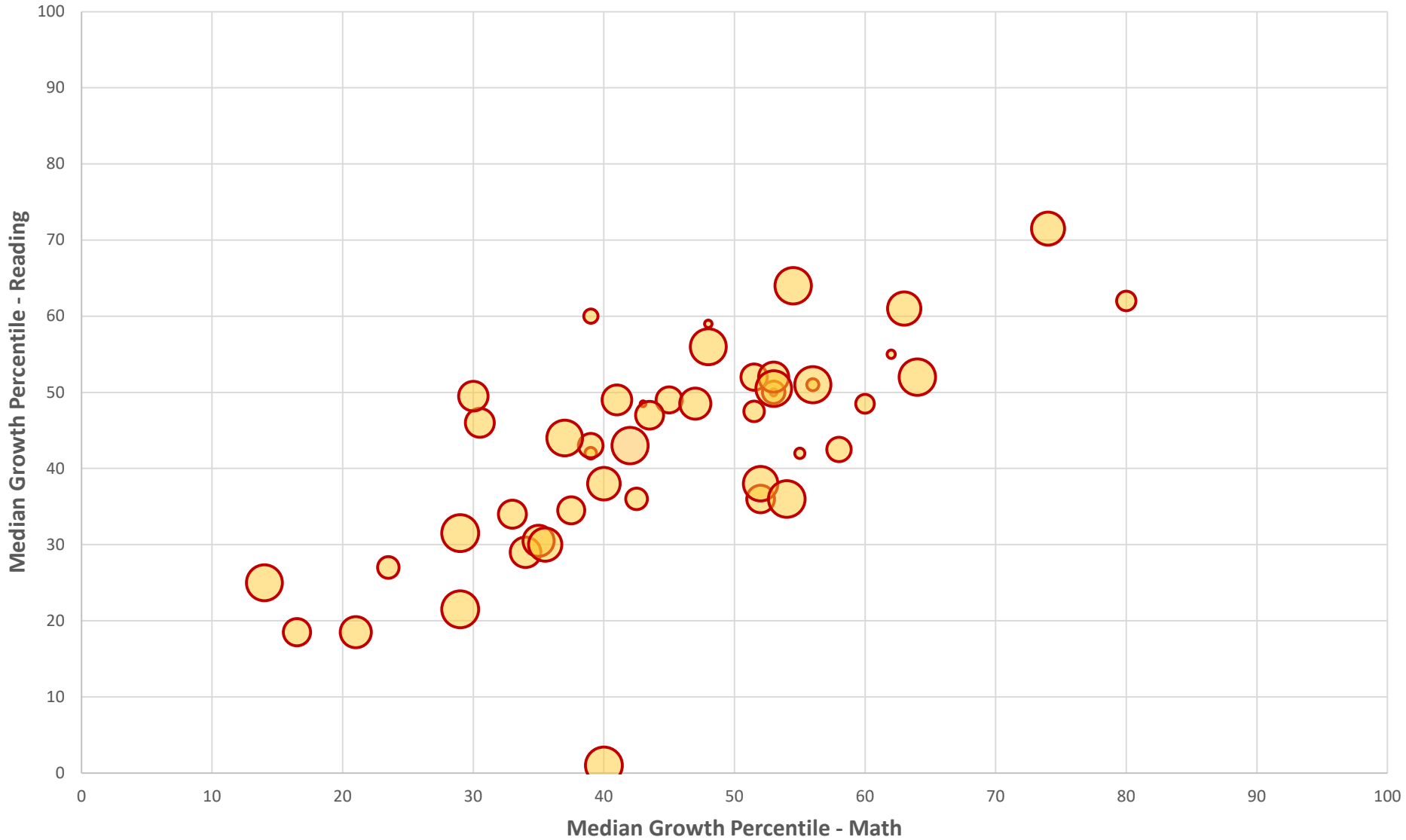
<b>Measure 2: Student Growth</b>					
The academic achievement of all students in grades 3-8 (NWEA), who have been enrolled one or more years at the Academy, will be assessed using the following measures and targets					
<b>Sub Indicator</b>	<b>Measure</b>	<b>Not Meeting</b>	<b>Approaching</b>	<b>Meeting</b>	<b>Exceeding</b>
<b>Against a Standard</b>	The median of student growth percentiles (MGP) reflecting fall-to-spring growth on the reading and math NWEA MAP tests.	MGP of Less Than 30	MGP of 30-49	MGP of 50-64	MGP of 65 or Higher
In the event that performance against the standard falls below these required expectations, “measurable progress toward the achievement of this goal” will be defined using the following measures and targets.					
<b>Over Time</b>	The percentage of students making at least one year’s growth over time. (CY-AVG(PY1+PY2+PY3))	Less than 1% Point	1.0-2.9% Points	3.0-5.9% Points	6.0% Points or More
<b>Comparison</b>	The mean student growth percentile reflecting growth on the two most recent state assessments will surpass the school’s Composite Resident District (CRD).	Underperforms CRD	Outperforms CRD between .01-4.9% Points	Outperforms CRD between 5.0-9.9% Points	Outperforms CRD by 10.0% Points or More

# 2018-19 MAP Growth: CMU Partner Schools Analysis



# 2018-19 MAP Growth: CMU Partner Schools Analysis

## Reading & Math MGP with Percent Eligible FRL



# Understanding Your Educational Goal: High School Achievement

---

## Historical Postsecondary Readiness Language

Grade(s)	Measure	Achievement Targets
9-11	The percentage of students achieving scaled scores that surpass state-selected, grade-level college readiness benchmarks on the PSAT and SAT tests in Evidenced-Based Reading and Writing and Math.	The percentage of students meeting or surpassing the grade-level benchmarks identified in this schedule will be at or above the 50 <sup>th</sup> percentile statewide.

# Understanding Your Educational Goal: Revised High School Framework

<b>Measure 3: Postsecondary Readiness</b>					
The “on-track” towards college readiness rates of all students in grades nine through eleven (PSAT/SAT) will be assessed using the following measures and targets.					
<b>Sub Indicator</b>	<b>Measure</b>	<b>Not Meeting</b>	<b>Approaching</b>	<b>Meeting</b>	<b>Exceeding</b>
<b>Against a Standard</b>	The percentage of students achieving scaled scores that surpass state selected on-track benchmarks for college readiness on the PSAT and ST test in Evidence-Based Reading and Writing (EBRW) and Math.	EBRW: Less than 50.0% Math: Less than 30.0%	EBWR: 50.0-59.9% Math: 30.0-39.9%	EBRW: 60.0-69.9% Math: 40.0-49.9%	EBRW: 70.0% or More Math: 50.0% or More
In the event that performance against the standard falls below these required expectations, “measurable progress toward the achievement of this goal” will be defined using the following measures and targets.					
<b>Over Time</b>	The percentage of students meeting or surpassing grade-level on track benchmarks for college readiness on the PSAT and SAT over time (CY-AVG(PY1+PY2+PY3))	Less than 1% Point	1.0-2.9% Points	3.0-5.9% Points	6.0% Points or More
<b>Comparison</b>	The percentage of students meeting or surpassing grade-level on-track benchmarks will surpass the school’s Composite Resident District percentage.	Underperforms CRD	Outperforms CRD between .01-4.9% Points	Outperforms CRD between 5.0-9.9% Points	Outperforms CRD by 10.0% Points or More

- June: NWEA MAP Achievement and Growth
- August: M-STEP Achievement, PSAT, SAT
- November - January: M-STEP Growth



- Changing the cohort of analysis from 3+ to 1+ years. (13,795 vs. 8,258)
- MAP achievement and growth measures will include grades 3-8 for all schools as applicable.
- Future reports will align with these updates.

- Some contracts already contain portions of or all of the revisions.
- Reauthorized Contracts
  - Class of 2019
  - Class of 2020
- Contract Amendments to address grade range, cohort and/or additional measures.

Questions?

Comments?

Thoughts?

## CONTACT INFORMATION AND QUESTIONS

---

### **Jason Sarsfield**

Deputy Director

989-774-2100 | [JSarsfield@TheCenterForCharters.org](mailto:JSarsfield@TheCenterForCharters.org)